

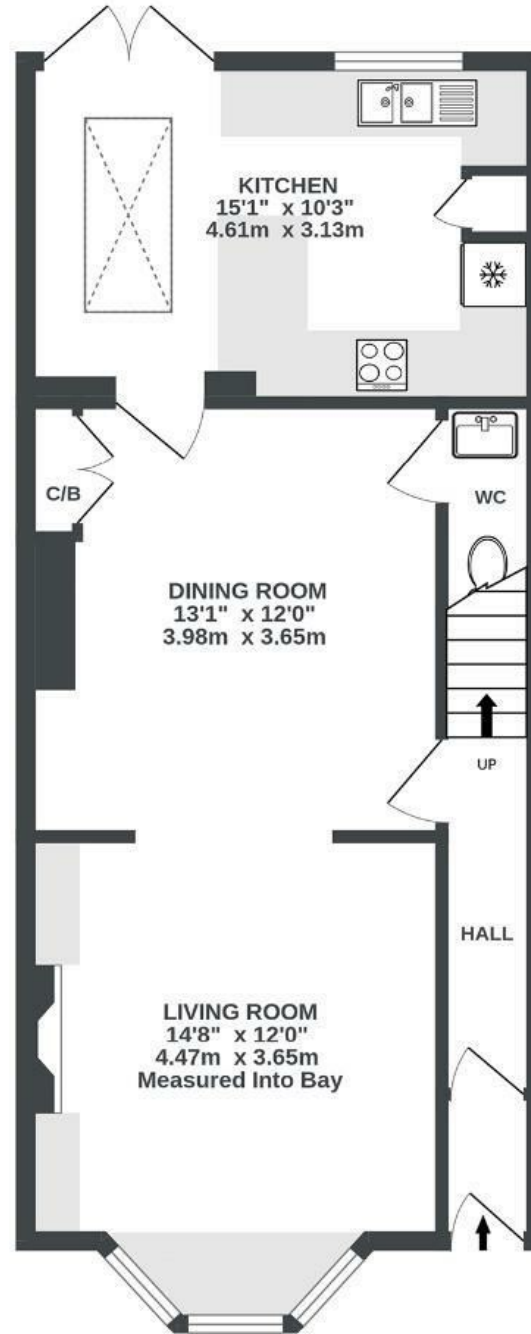
Hanham Road

HANHAM

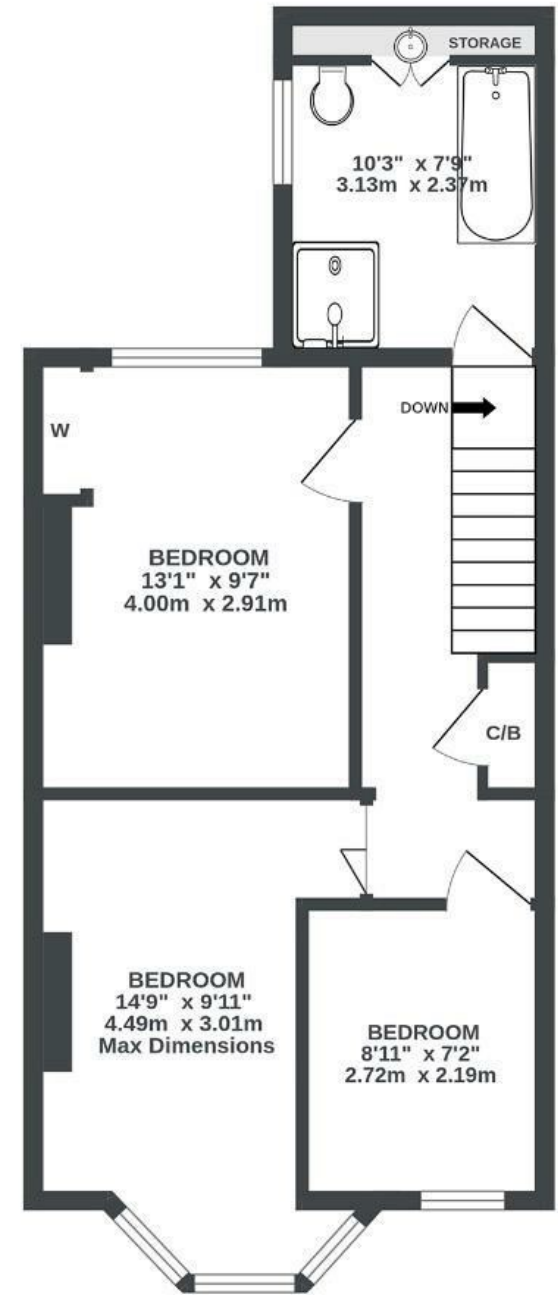
APPROXIMATE FLOOR AREA
93.9 SQM / 1011 SQFT



GROUND FLOOR
540 sq.ft. (50.2 sq.m.) approx.



1ST FLOOR
471 sq.ft. (43.8 sq.m.) approx.



Illustrations are for reference purposes only, measurements are approximate, not to scale.

Boardwalk

Hanham Road

HANHAM, BRISTOL

£

£375,000

zzz

3 Bedrooms



BS15 8PB



2 Bathrooms

“Hosting our friends on a summers evening with the French doors open and the evening sun streaming into the kitchen is such a joy in this house. The open plan living and dining room has been perfect for our Halloween parties too.”

